



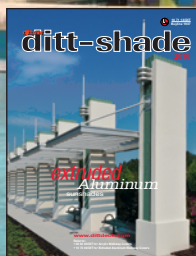
08 63 00/DIT
Buyline 1903

dittmer

ditt-dome

2010

acrylic
walkway
covers



Refer to:

- 10 73 00/DIT for Extruded Aluminum Walkway Covers
- 10 71 13/DIT for Extruded Aluminum Sunshades

www.dittdeck.com

Photography by dana



- Central Booking Facility, Orlando, Florida
- Design Group • Architect
- Gulf Seaboard General Contracting, Inc.



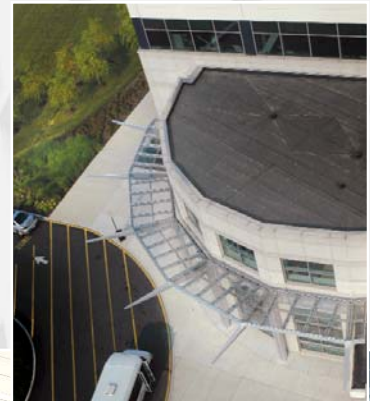
- SeaWorld Penguin Encounter, Orlando, Florida
- Dean Price Architect • Architect
- Weddle Brothers • Contractor

Front cover photo:

- Aqua At Millenia, Orlando, Florida
- Charlan, Brook & Associates, Inc. • Architect
- BSP Construction Services, Inc. • Contractor



- Orange County Regional Service Center, Orlando, Florida
- Burke, Bales & Mills • Architect
- Brasfield & Gorrie • Contractor



- Liberty Health Jersey City Medical Center Wilzig Hospital, Jersey City, New Jersey
- Ballinger • Architect
- Gilbane Building Company • Contractor



- Vassar Brothers Medical Center
- Poughkeepsie, New York
- Perkins Eastman Architects PC • Architect
- Barr & Barr, Inc. • Contractor

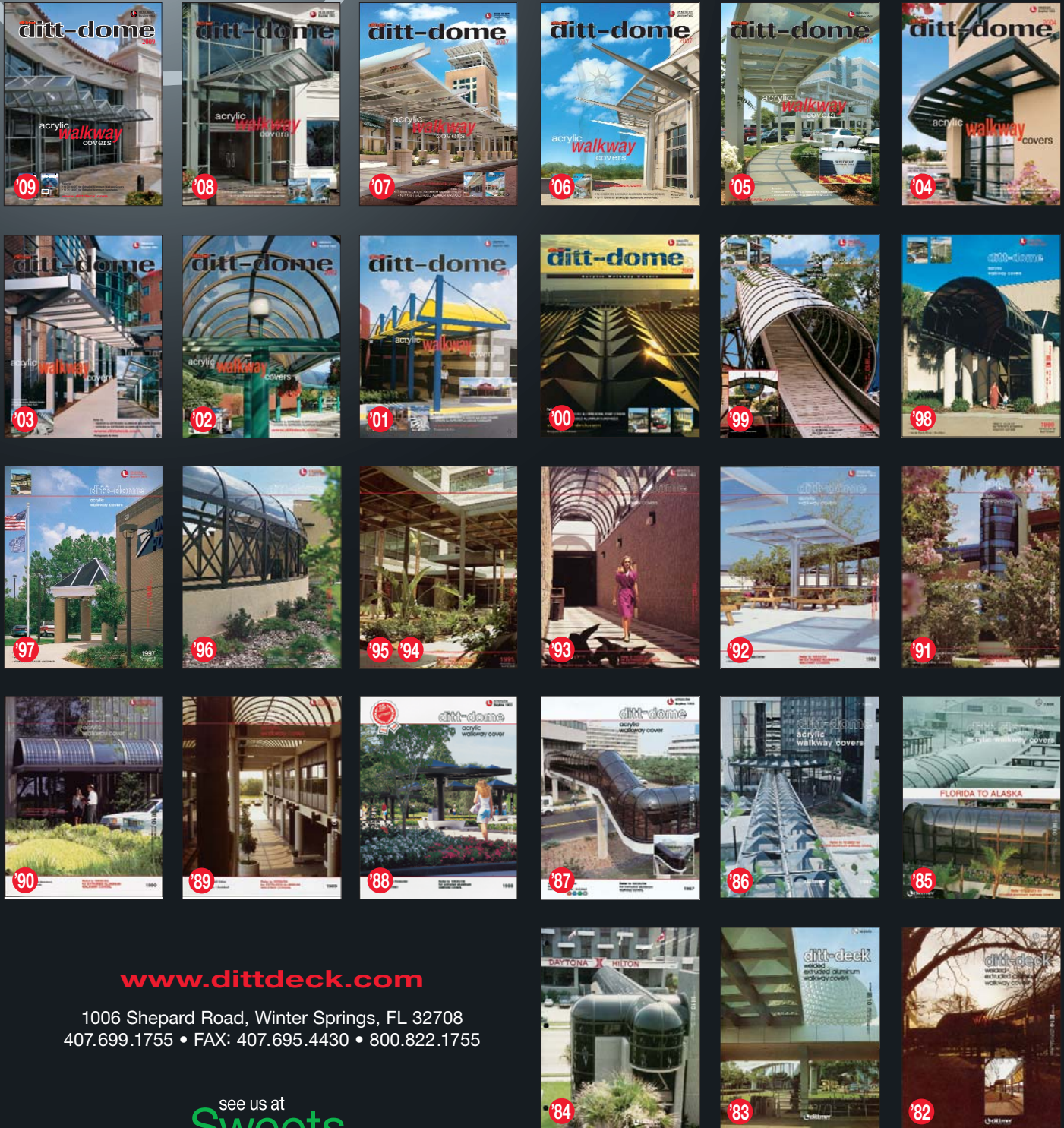


- Palmetto Elementary School, Orlando, Florida
- Reynolds, Smith & Hills, Inc. • Architect
- Turner Construction/PSA • Contractor



- St. Petersburg - Clearwater International Airport,
St. Petersburg, Florida
- Alfonso Architects • Architect
- Creative Contractors, Inc. • Contractor

Call for our nearest representative at
800.822.1755
or Sweet's Buyline at 800.633.1180



www.dittdeck.com

1006 Shepard Road, Winter Springs, FL 32708
407.699.1755 • FAX: 407.695.4430 • 800.822.1755

see us at
Sweets.com